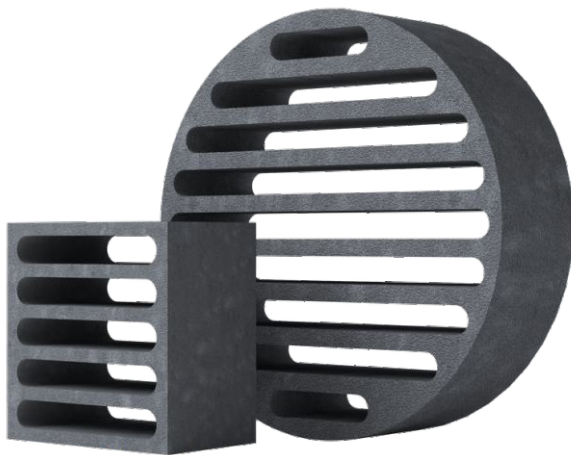


# FIREFIX

## FIRE PROTECTION GRILLES

FIREFIX fire protection grilles are used in partition walls, walls, doors and other constructions that require air circulation through them. The grilles are made of composite material and are rubberised with an intumescent compound.

An increase in temperature above 160°C causes a thermal expansion of the material and increase in volume. The grille material expands thermally, increasing in volume and blocking the airflow in the vent, blocking the path to flames, hot and toxic gases.



### TECHNICAL FEATURES

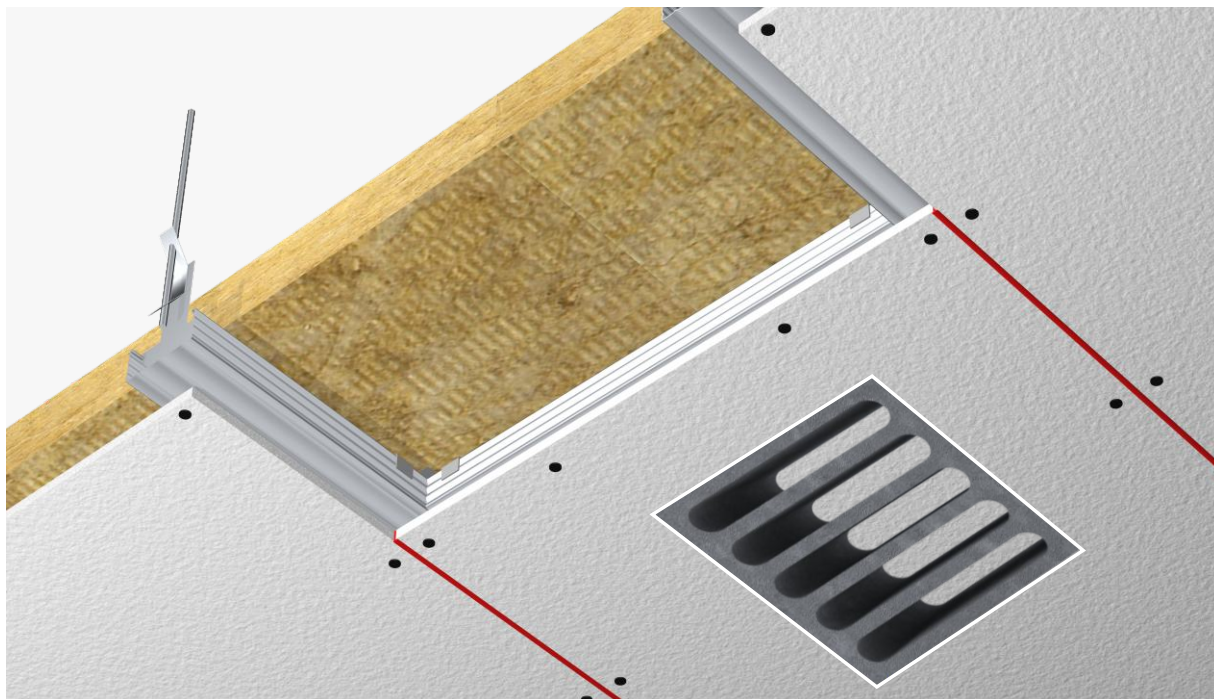
width	100-600 mm
length	100-600 mm
depth	40-100 mm
fire resistance	EI 45-180
throughput	70%
full seal	2 minutes

Grilles of non-standard dimensions are available at the request of the customer. If the size of the grilles exceeds 600 x 600 mm, a prefabricated structure of several sections is used.



**TEHSTRONG**  
FIRESTOP

ONCE INSTALLED, THE SYSTEM REQUIRES NO MAINTENANCE AND PERIODIC MONITORING



## ADVANTAGES

- Easy and fast installation in most constructions
- Can be used in rooms with high humidity
- Resistant to all kinds of vibrations
- Suitable for horizontal and vertical mounting

## FIELD OF USE

- Natural ventilation in fire resistant walls and partitions
- Fresh air ventilation through fire resistant suspended ceiling
- Arrangement of ventilation for fire resistant doors
- Fire protection grilles for ventilation ducts

## INSTALLATION

The fire protection grille must be installed in an opening prepared beforehand in the structure. The size of the opening must be 2-4 mm wider and higher than the fire protection grille.

Apply the FIREFIX sealant to the sides of the ventilation grille before installation and set the grille in the opening.

Any gaps and crevices caused during installation must be filled with the FIREFIX sealant to ensure an airtight seal.

To prevent damage, the FIREFIX grille must be covered on both sides with a steel or aluminium decorative grille.

**ONCE INSTALLED, THE SYSTEM REQUIRES NO MAINTENANCE AND PERIODIC MONITORING**

